

Gateway

Open to begin the journey...

Welcome to your Gateway MP3 Photo Jukebox

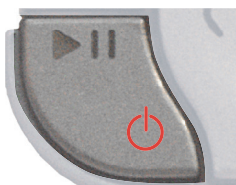
Get Started

To connect to your jukebox, your computer must have the following minimum requirements:

- Microsoft® Windows® XP
- Intel® Pentium III 333 MHz processor
- Microsoft Windows Media® Player 10
- 128 MB memory
- 80 MB hard drive space

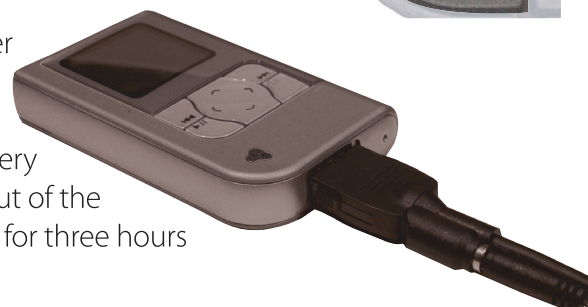
To turn on your jukebox:

- Press the power button. The jukebox turns on, and the *Main Menu* appears after a few seconds.



To charge the battery:

Connect the jukebox either to the AC power adapter (fastest) or to a USB port on the computer. The battery will not be fully charged out of the box, so charge the battery for three hours before use.

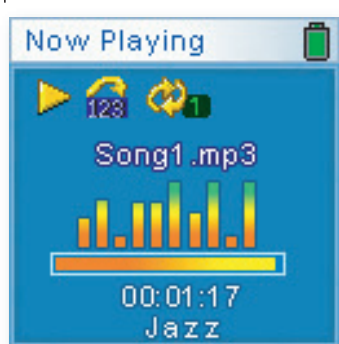


Play Music

To play music:

- From the *Main Menu*, press \wedge or \vee to highlight **Music**, then press \rightarrow to open the *Music* menu.
- Highlight any of the options below, then press \rightarrow to open the submenu.

Playlists	Artists
Albums	Genres
All Music	Now Playing
- Highlight the song or song list you want to play, then press \rightarrow .
- Highlight **Play**, then press \rightarrow .

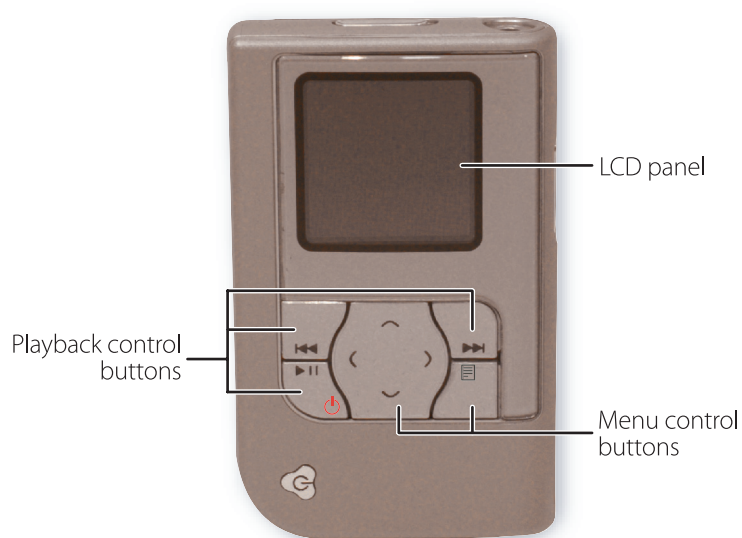


Napster To Go

With Napster To Go™, you can transfer an unlimited amount of music to your jukebox for a low monthly fee. Fill your player, listen to all the music, then fill it up again from your choice of over a million tracks. For detailed instructions on downloading music, see the user guide.

Look for your free trial insert inside the box.

Navigate your Photo Jukebox



During playback, use the playback control buttons to skip to the next track in the playlist, skip to a previous track, fast-forward or reverse within a song by holding down either key, or pause the song.

The menu control buttons let you open menus and change settings.

- \wedge \vee Up and down arrows select the menu choices and change settings.
- \rightarrow Right arrow opens the menu that is highlighted.
- \leftarrow Left arrow opens the previous menu or cancels.
- \rightarrow Option opens the shortcut menus.

For more information, see the user guide.

Check Gateway eSupport
For frequently asked questions, setup help, and immediate information on common technical issues, check out the Web at support.gateway.com

888-737-6949 (phone or Web orders)
605-232-2118 (in-store purchases)
6 a.m. - 12 midnight Pacific Time
TDD Technical Support
(for hearing impaired) call:
800-846-1778



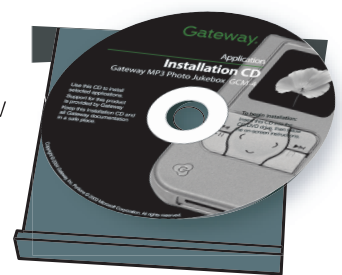
Package contents include:

Tools for Your Road Trip

Install Software

To install the software:

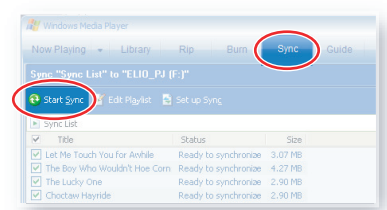
Place the *Installation CD* label-side up into the computer's CD or DVD drive, then follow the on-screen prompts.



For detailed instructions and descriptions, see the user guide.

To sync music with your computer:

- On your computer, click **Start**, **All Programs**, **Accessories**, **Entertainment**, then click **Windows Media Player**.
- Click the **Sync** tab.
- Turn on your jukebox and connect it to your computer with the USB combo cable. You are prompted to select the sync method.
 - Select **Automatic** to sync the tracks with your jukebox each time you connect it to your computer.
 - Select **Manual** to manually select tracks on your computer before starting the sync. When the sync is finished, you can disconnect your jukebox.



View Photos

You can copy photos from a digital camera or from your computer.

To copy from a digital camera:

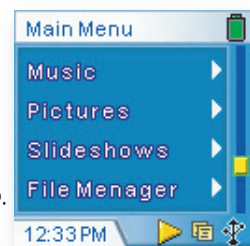
- Turn on the jukebox, then attach the USB camera interface cable.
- Connect your camera to its USB cable. Your player asks to upload all files.
- Press \wedge or \vee to highlight **Yes**, then press \rightarrow to upload files.
- Disconnect the cables when the transfer is finished.

To copy photos from your computer:

- Turn on your jukebox, then connect it to the computer with the USB combo cable.
- In Windows Explorer, find and select the photos you want to copy, click **Edit**, then click **Copy**.
- Open the drive for your jukebox (the jukebox appears as a drive), click **Edit**, then click **Paste**.

To view photos:

- From the *Main Menu*, press \wedge or \vee to highlight **Pictures**, then press \rightarrow to open the *Pictures* menu.
- Highlight a photo folder, then press \rightarrow to open the folder.
- Highlight a photo, then press \rightarrow to view the photo.



For detailed instructions and additional transfer options, see the user guide.

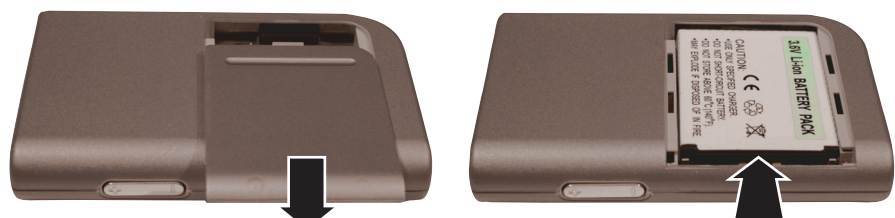
Replace the battery

For extended listening time without recharging, you can install a spare battery. With an extra battery or two, you can increase the jukebox play time from 8-10 hours to 16-20 or 24-30 hours.

To buy additional batteries, see www.gateway.com/photojukeboxextras.

To replace the battery:

- Turn off the jukebox.
- Turn the jukebox over, then slide off the battery cover.
- Press the battery toward the far side of the jukebox, then lift the battery out of the jukebox.
- Insert the replacement battery into the battery bay, making sure the contacts on the battery align with the contacts in the battery bay.
- Replace the battery cover.



Caution: Never shake the jukebox to remove the battery. Shaking the jukebox will damage its hard drive.